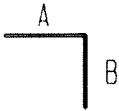
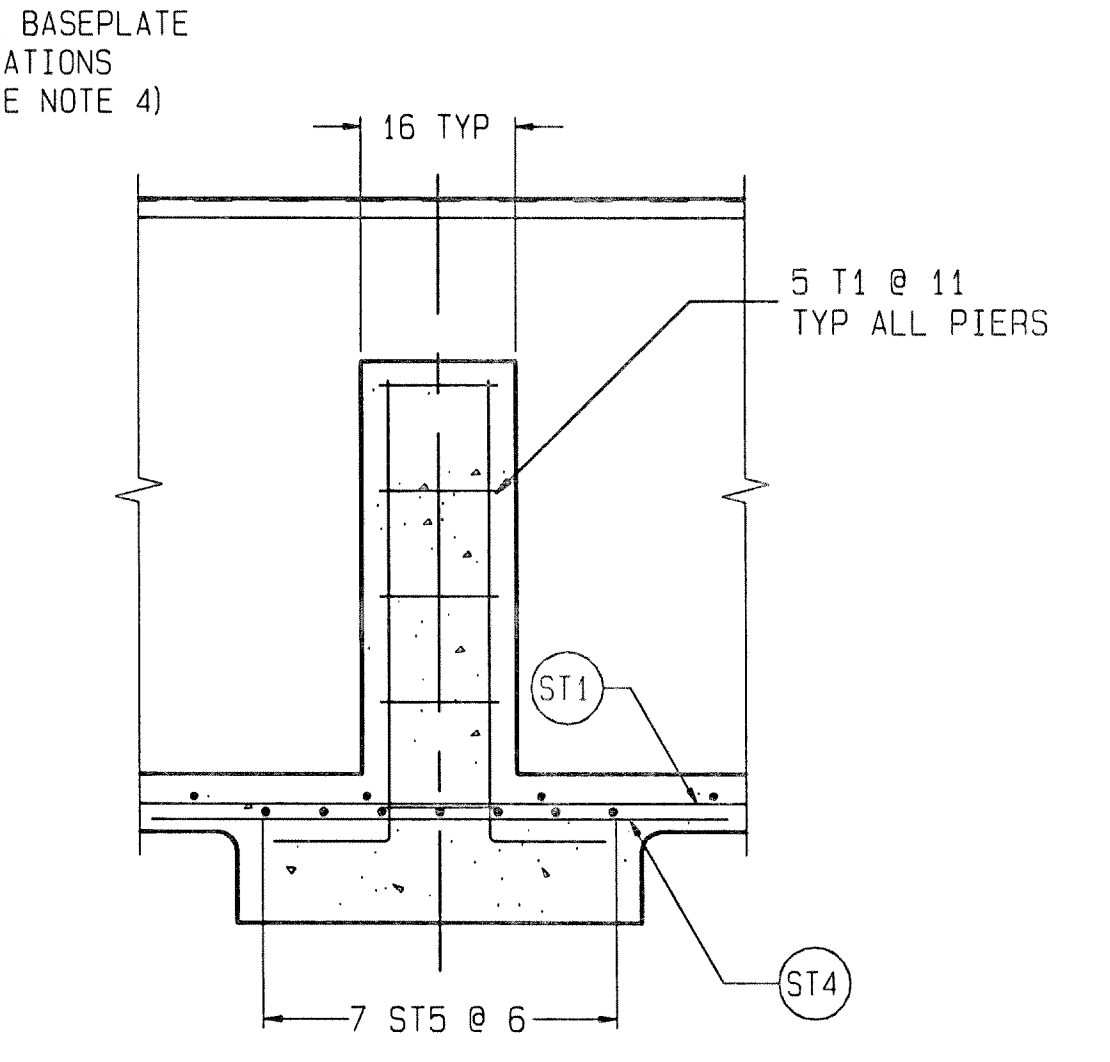
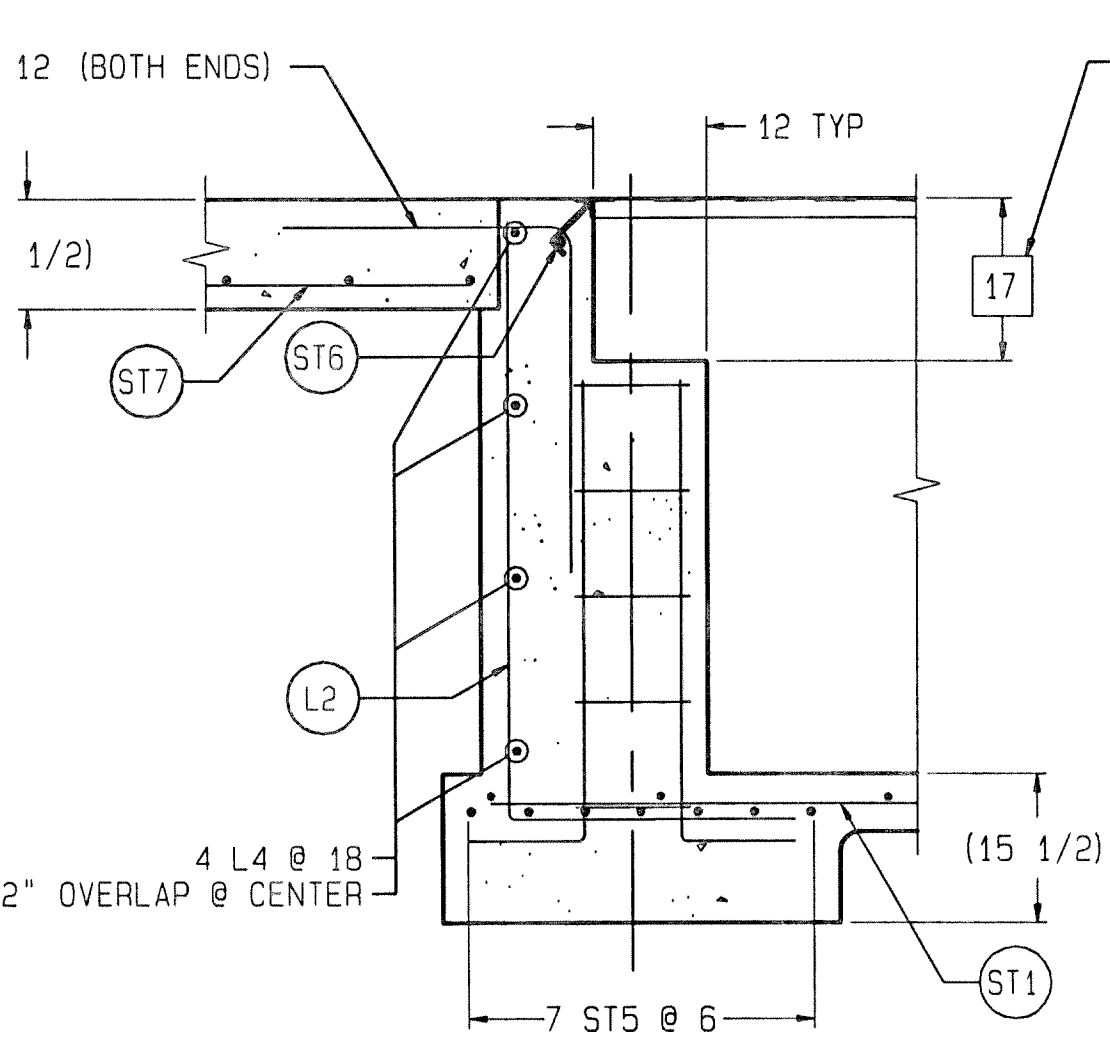
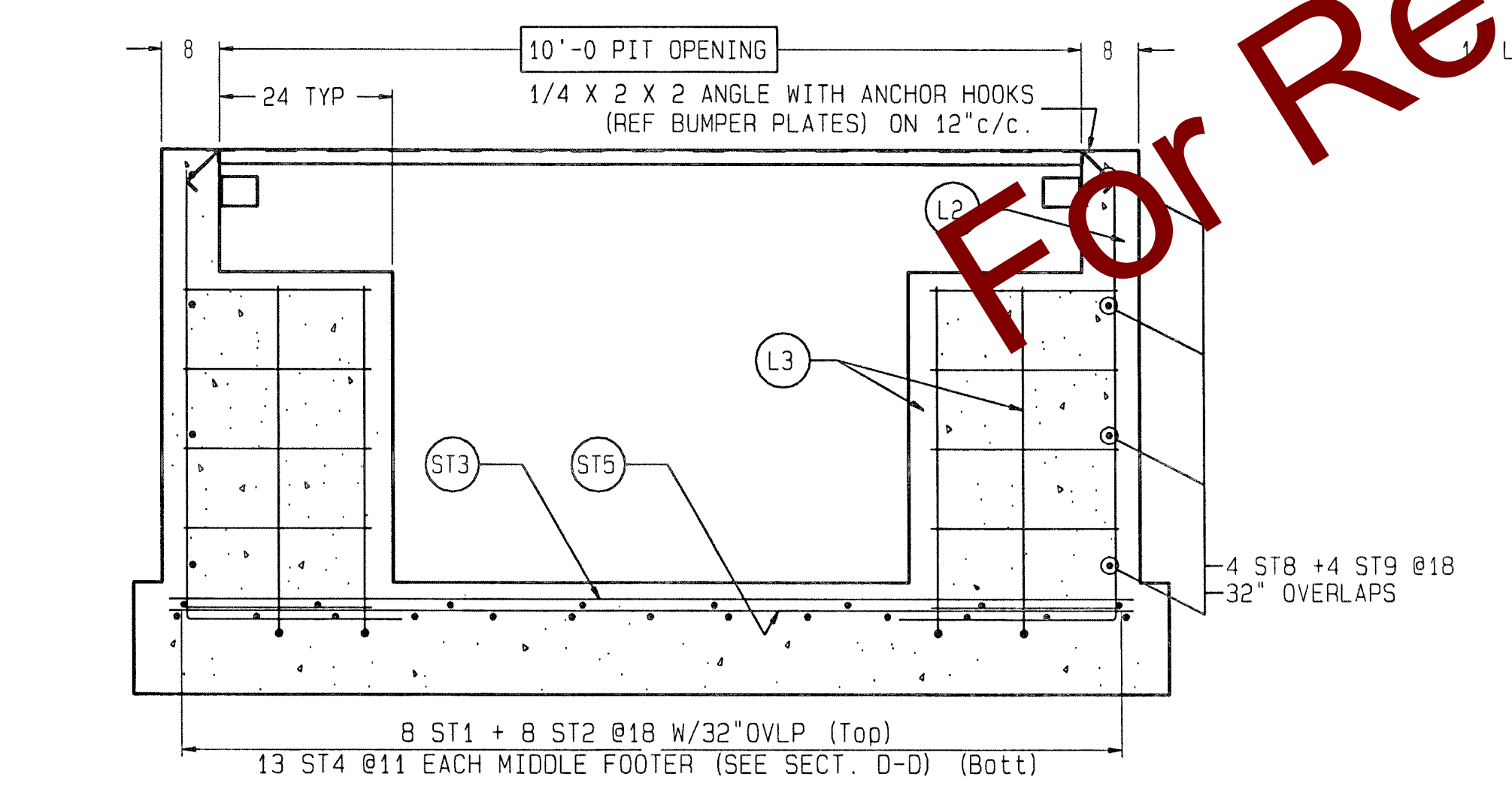


NOMINAL CLEARANCE BETWEEN FLOOR AND SCALE		4'
CONCRETE (CU. YDS.)		55
REINFORCING STEEL		3798
Y1 (SECTION A-A)		5'-0
Y2 MINIMUM (SECTION A-A)		6'-3 1/2

REINFORCING STEEL SCHEDULE (A.S.T.M. A-615 GRADE 60)						
COLD FORM BARS TO INSIDE DIMENSIONS						
SYM	QTY	SIZE	LOCATION, DIRECTION	A	B	WGT
ST1	8	#4	FLOOR, LONG.	40'-0		214
ST2	8	#4	FLOOR, LONG.	35'-0		188
ST3	49	#4	FLOOR, LATERAL	11'-6		377
ST4	39	#4	FOOTERS, LONG.	5'-0		131
ST5	35	#5	FOOTERS, LATERAL	11'-6		420
ST6	20	#5	APPROACH, LATERAL	9'-6		199
	2		END WALLS, LATERAL			20
ST7	20	#5	APPROACH, LONG.	9'-6		199
ST8	8	#4	SIDE WALLS, LONG.	40'-0		214
ST9	8	#4	SIDE WALLS, LONG.	34'-4		184
L1	20	#5	APPROACH TO END TIES	2'-6	3'-0	115
L2	165	#4	WALL TO FLOOR TIES	2'-6	5'-2	851
L3	40	#5	(SEE DETAIL ITEM T1)	1'-0	4'-0	209
L4	16	#4	(CORNERS)	2'-0	6'-9	94
T1	50	#5	(SEE DETAIL ITEM T1)	7'-4		383

- NOTES:**
- 1) USE MINIMUM 3000 PSI STRENGTH CONCRETE AT 28 DAYS WITH 5-7% AIR ENTRAINMENT.
 - 2) USE MINIMUM 60KSI YIELD DEFORMED REINFORCING STEEL. REBAR MINIMUM DEPTH OF COVER SHOULD BE IN ACCORDANCE WITH THE LATEST ACI BUILDING CODE REQUIREMENTS FOR STRUCTURAL CONCRETE (ACI 318-SECTION 7.7), UNLESS OTHERWISE SPECIFIED.
 - 3) FOUNDATION REQUIRES 2000 PSF RATED SOIL.
 - 4) TOP OF CONCRETE AT BASEPLATE LOCATIONS TO BE LEVEL AND IN ONE PLANE $\pm 1/8"$
 - 5) DIAGONAL MEASUREMENTS ENDWALL TO ENDWALL MUST BE EQUAL WITHIN $1/2"$. THIS IS VERY IMPORTANT!! SCALE INSTALLATION WILL BE DIFFICULT OR IMPOSSIBLE IF SQUARENESS IS NOT HELD TO THIS TOLERANCE.
 - 6) BASEPLATE ANCHORS SUPPLIED BY METTLER TOLEDO. USE BASEPLATES AS TEMPLATES TO LOCATE ANCHORS DURING SCALE INSTALLATION.
 - 7) RAMP LENGTH: -PER LOCAL REGULATIONS (1/2" SLOPE PER FOOT TYPICAL)
 - 8) BOTTOM OF FOOTERS MUST BE BELOW LOCAL FROSTLINE.
 - 9) CONTRACTOR SUPPLIES:
 - EXCAVATION
 - REINFORCING STEEL
 - CURB ANGLE ASSEMBLIES (SECT B-B)
 - CONCRETE AND FORMS
 - 1 1/2" DIA CONDUIT
 - BUMPER PLATE ASSEMBLIES (VIEWS J-J & N-N)



SECTION B-B
SCALE: 1/20

SECTION C-C
SCALE: 1/20
(TYPICAL END FOOTER)

SECTION D-D
SCALE: 1/20
(TYPICAL MIDDLE FOOTER)
(SINGLE BASEPLATE)

REV	CHANGE	BY	DATE	SCALE .02	DATE 06/03/10	DRN KRS APPD JLB	METTLER TOLEDO	
							TITLE VTS10X FOUNDATION: PIT, 70' X 9'-10	
							UNLESS OTHERWISE SPECIFIED, ALL DIMENSIONS ARE IN INCHES, AND DIMENSIONAL TOLERANCES ARE:	
							FRACTIONAL .XX \pm .02 ANGULAR \pm .5°	
							TC207999	